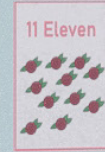
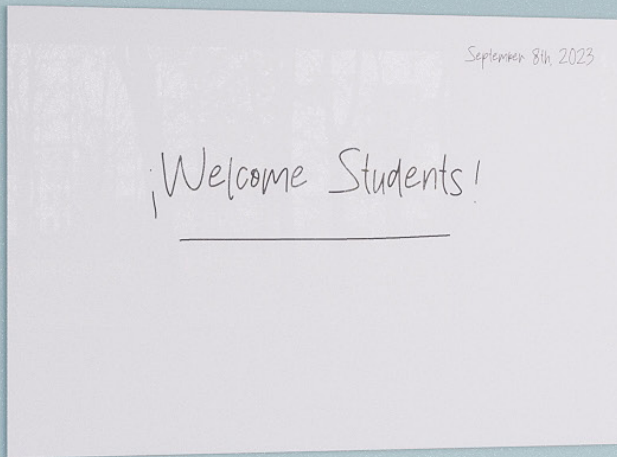
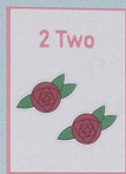




LEARNING SURFACES



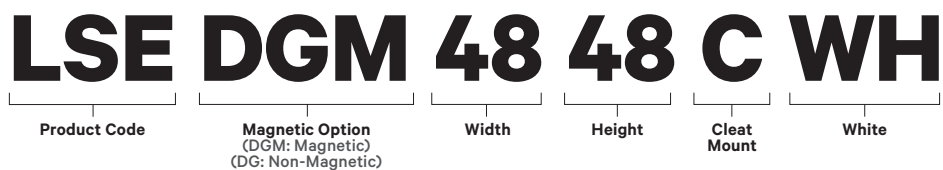
PRODUCT SPECIFICATIONS & FEATURES

Having the correct tools can make all the difference in facilitating best-in-class student experience. Learning Surfaces is a presentation tool designed to support and facilitate effective communication. Learning Surfaces are made for demanding environments that require versatile, high-performance boards. This board is an ideal communication solution built with busy teachers and students in mind. The boards are made for busy and boisterous classrooms, delivering long-lasting quality with environmental responsibility.

Draw, Write, Erase, Repeat.

PRODUCT CODE	PRODUCT SIZE (Nominal)
Non-Magnetic	
LSEDG3648CWH	36" x 48" x 0.2"
LSEDG4848CWH	48" x 48" x 0.2"
LSEDG6048CWH	60" x 48" x 0.2"
LSEDG7248CWH	72" x 48" x 0.2"
LSEDG9648CWH	96" x 48" x 0.2"
Magnetic	
LSEDGM3648CWH	36" x 48" x 0.2"
LSEDGM4848CWH	48" x 48" x 0.2"
LSEDGM6048CWH	60" x 48" x 0.2"
LSEDGM7248CWH	72" x 48" x 0.2"
LSEDGM9648CWH	96" x 48" x 0.2"

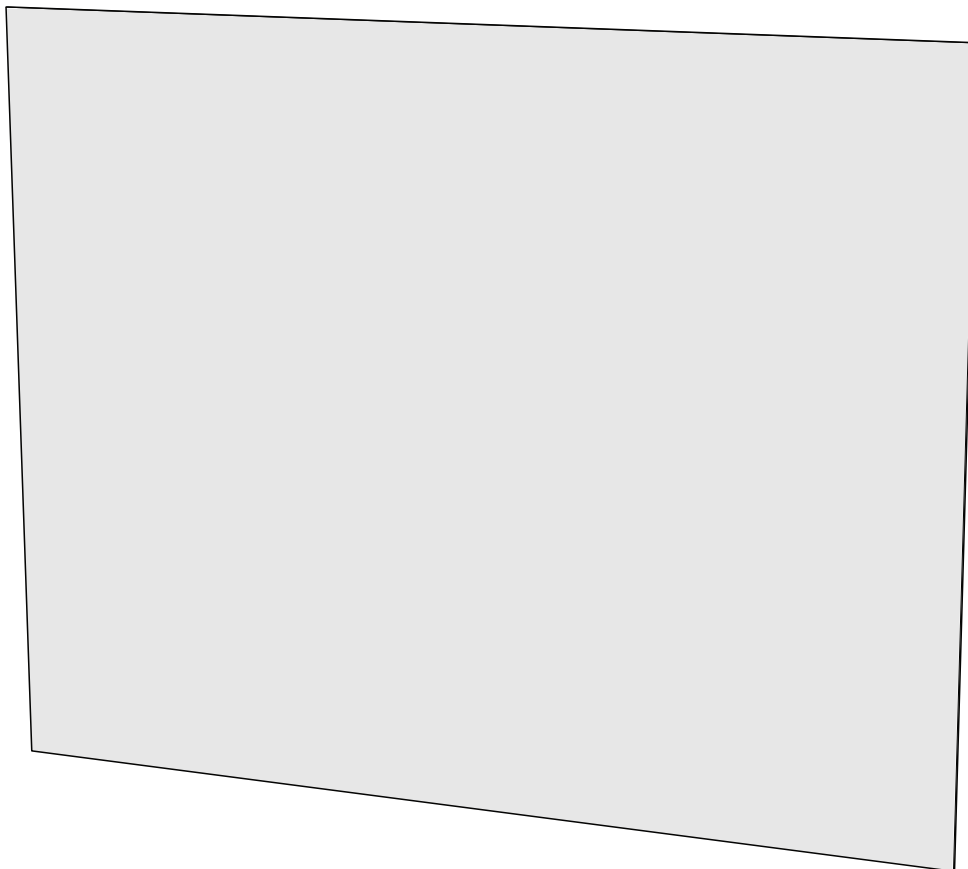
PRODUCT CODE



BOARD HEIGHT & WIDTH MARKER & CORK BOARD

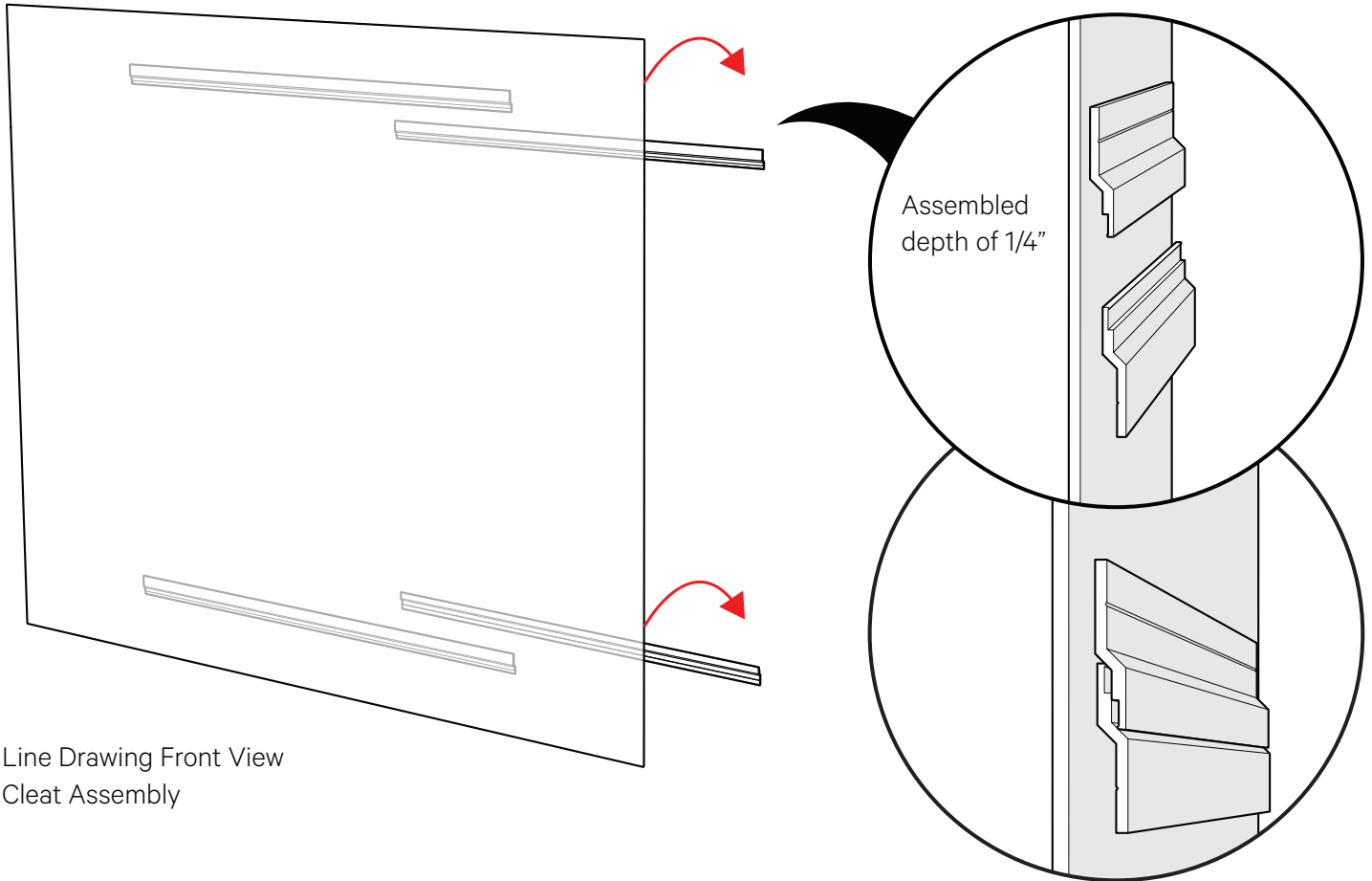
48 x 48	60 x 48	72 x 48	96 x 48
48 x 36			

BOARD PROFILE



Line Drawing Front View

BOARD PROFILE



Line Drawing Front View
Cleat Assembly

WARRANTY INFORMATION

WHAT'S COVERED BY THE LEARNING SURFACES FULL LIFETIME WARRANTY?

Your LEARNING SURFACES Full Lifetime Warranty applies to All LEARNING SURFACES product lines, materials, and components. The warranty applies to LEARNING SURFACES products sold within the original purchaser.

IS ANYTHING NOT COVERED?

There are a few exclusions to the LEARNING SURFACES Full Lifetime Warranty. These exclusions are:

- Installation
- Electrical Components 1 year or manufacturers warranty whichever is greater.
- Color-fastness or matching of colors, woodgrains, or textures occurring in wood, leather, or other materials that naturally exhibit inherent color variations.
- Customer's own materials (COM) selected by and used at the request of a user.
- Modifications or attachments to the product that are not approved by The LEARNING SURFACES Company and product failures resulting from such modifications or attachments.
- Product normal wear and tear, which is to be expected over the course of ownership.
- Products that were not installed, used, or maintained in accordance with product instructions and warnings.
- Products used for rental purposes.
- Damage caused by cleaning chemicals.
- Dye transfers caused by external contaminants (including clothing and accessory dyes such as those used on denim jeans) may migrate to lighter colors. This phenomenon is increased by humidity and temperature and is irreversible.



Having the correct tools can make all the difference in facilitating best-in-class student experience. Learning Surfaces is a presentation tool designed to support and facilitate effective communication. Learning Surfaces are made for demanding environments that require versatile, high-performance boards. This education board is an ideal communication solution built with busy teachers and students in mind. The boards are made for busy and boisterous classrooms, delivering long-lasting quality with environmental responsibility.

Draw, Write, Erase, Repeat.